



Geotechnisches Ingenieurbüro
Prof. Fecker und Partner GmbH

Messprogramm
ETIBS® - Optischer Bohrlochscanner
ABF - Akustisches Bohrlochfernsehen

Erkundungsobjekt
Rhein-Main-Link, PFA HE1

Auftraggeber: Bohr- ArGe 3-5
Bohrung: P05-Lif-BK-0028
Ort: Lichtenfels
Auftragsnummer: e-3679

Teufenmaßstab
1:10


Koordinaten
Rechtswert:
Hochwert:
Höhe ü. NN:

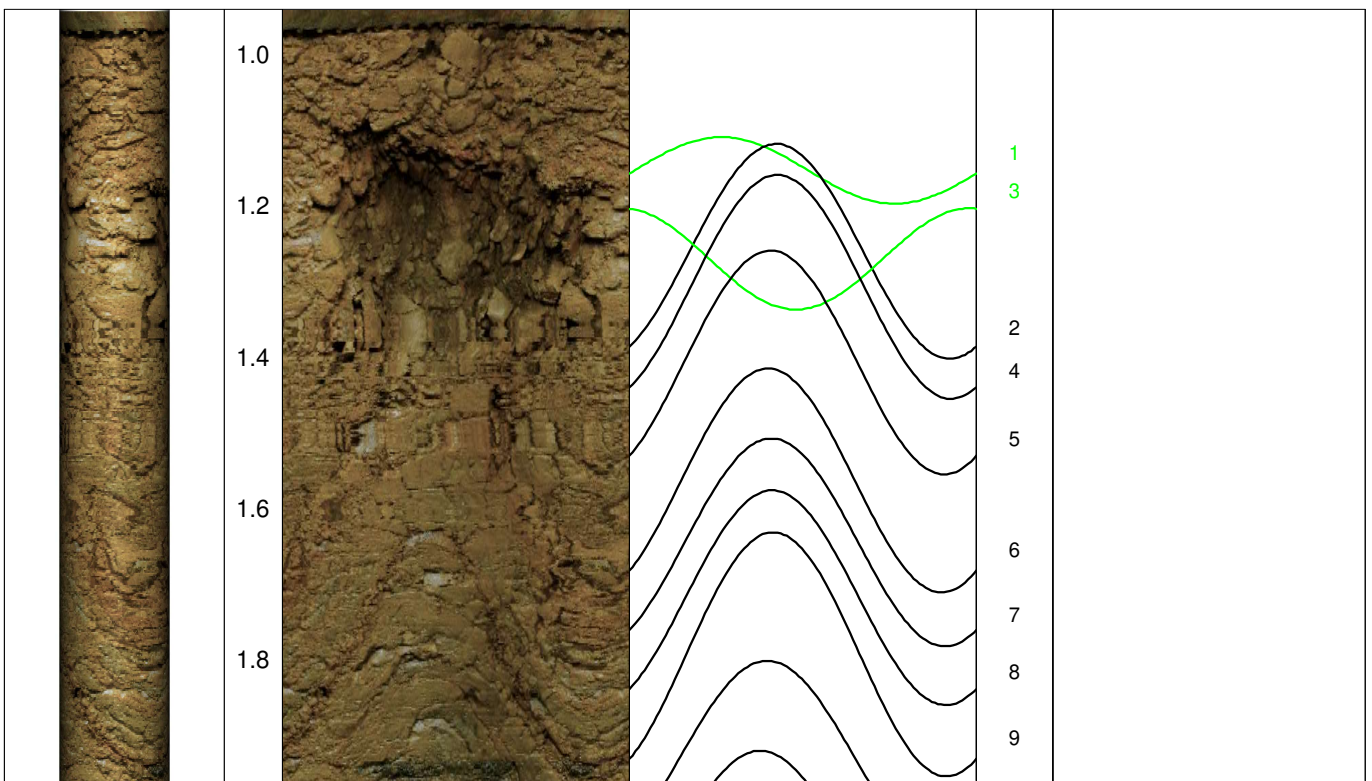
Messbezugspunkt: GOK

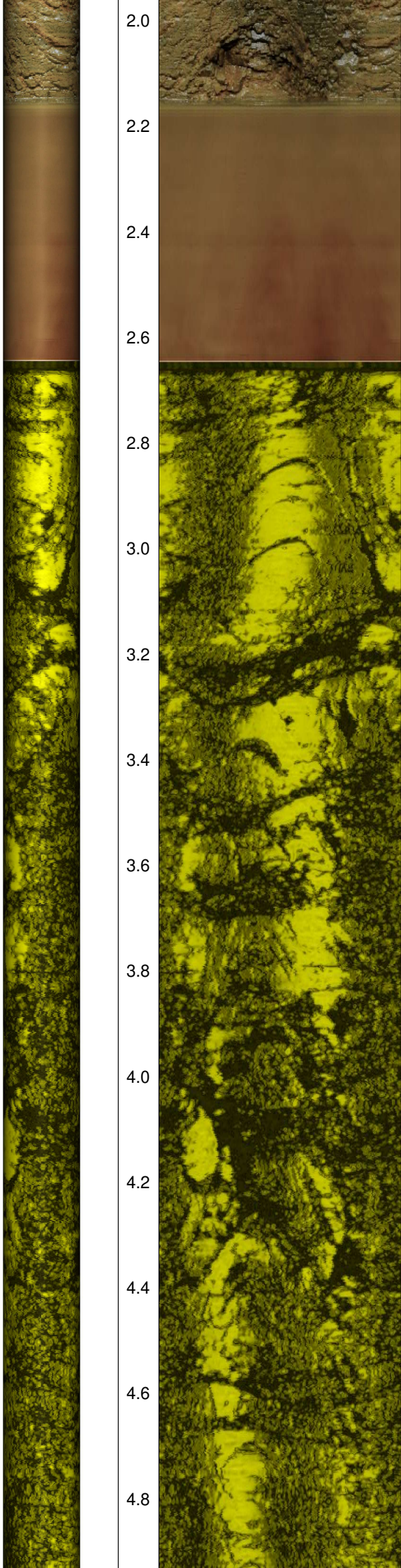
Messdatum:	25.02.2025	Bohrlochdurchmesser:	146 mm
Bohrteufe:	20.0 m (lt. BM)	Richtung der Bohrung:	vertikal
Messintervall:	0.94 m - 20.00 m (19.06 m)	Quelldatei:	Lif0028.blk / Lif0028.log
Verrohrung bis:	0.97 m	Messingenieur:	Hr. Newrzella
Wasserstand:	2.16 m, fallend	Bearbeiter:	Hr. Barsuhn

Bemerkungen: Messintervall ETIBS: 0.94 m - 2.64 m (1.70 m)
Messintervall ABF: 2.64 m - 20.00 m (17.36 m)

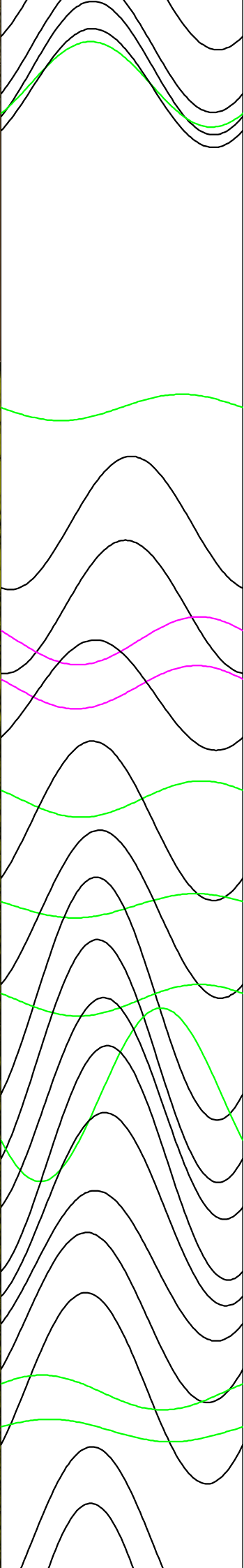
Trennflächen : schwarz - Schichtung / Schieferung
blau - Schrägschichtung
magenta - Klüfte
grün - Klüfte nur z. T. erkennbar

Pseudokern 	[m]	Bohrlochabwicklung					Trennflächenabwicklung					Nr.	Bemerkung
		N	O	S	W	N	N	O	S	W	N		



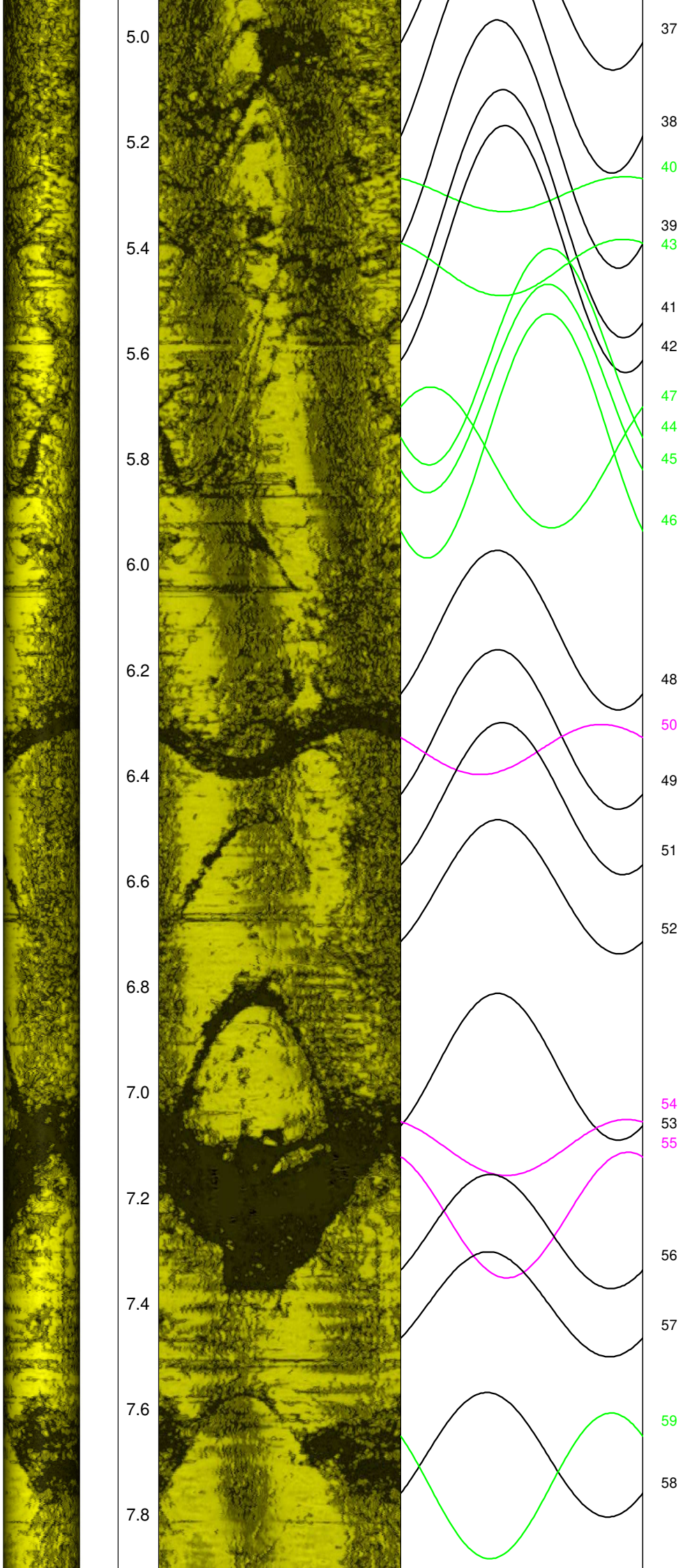


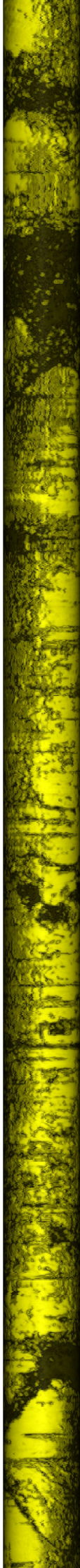
2.0
2.2
2.4
2.6
2.8
3.0
3.2
3.4
3.6
3.8
4.0
4.2
4.4
4.6
4.8



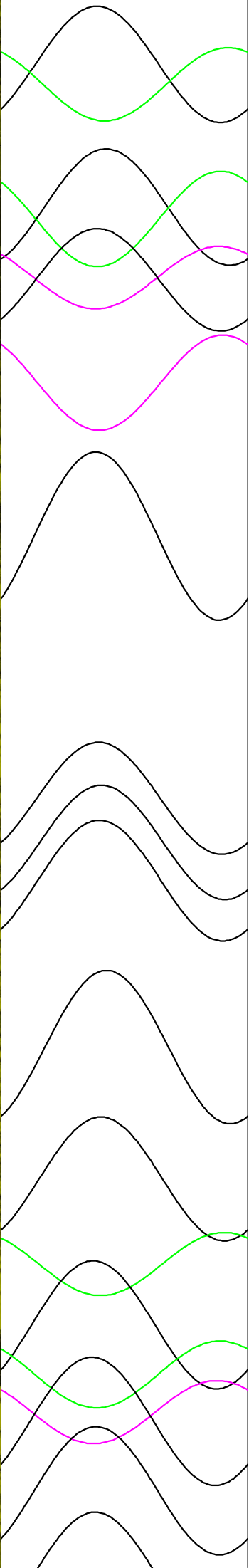
10
11
12
13
14
15
16
17
18
19
20
21
22
23
24
25
26
27
28
29
30
31
32
33
34
35
36

Wasserspiegel





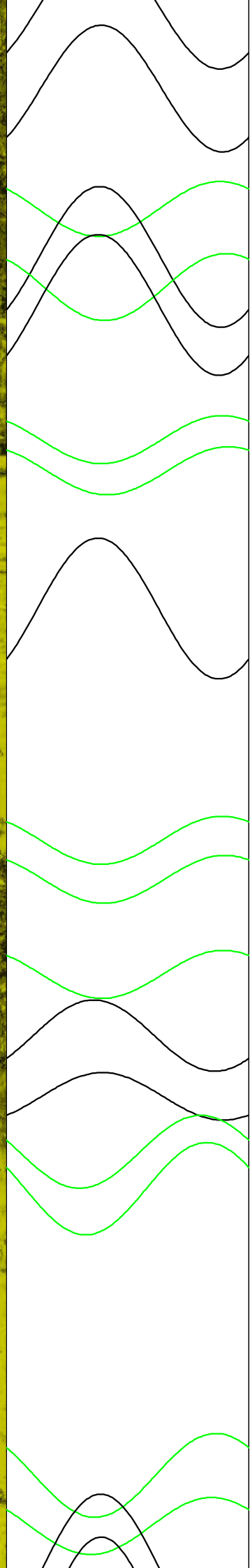
8.0
8.2
8.4
8.6
8.8
9.0
9.2
9.4
9.6
9.8
10.0
10.2
10.4
10.6
10.8



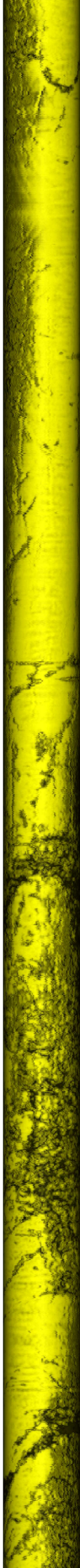
61
60
63
64
62
65
66
67
68
69
70
71
72
73
75
74
76
77
78



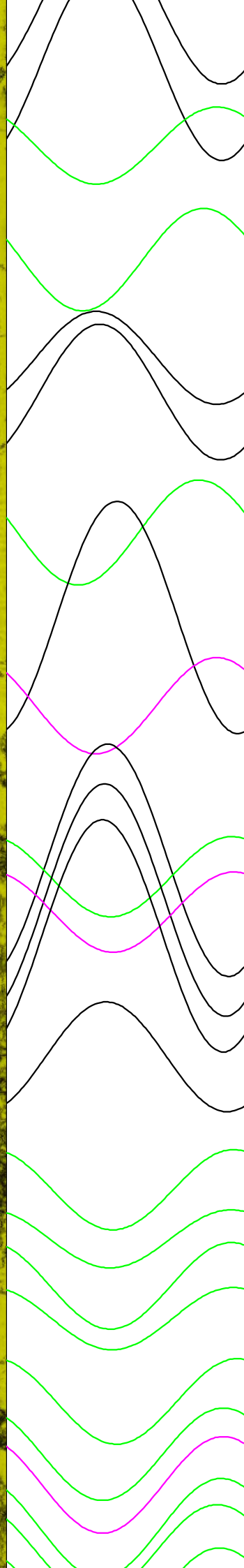
11.0
11.2
11.4
11.6
11.8
12.0
12.2
12.4
12.6
12.8
13.0
13.2
13.4
13.6
13.8



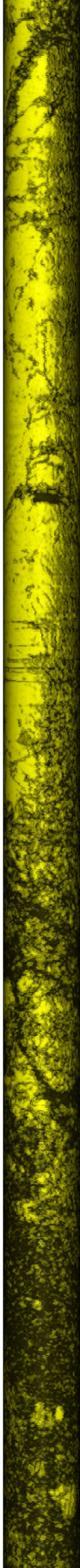
79
80
81
83
82
84
85
86
87
88
89
90
91
92
93
94
95
96



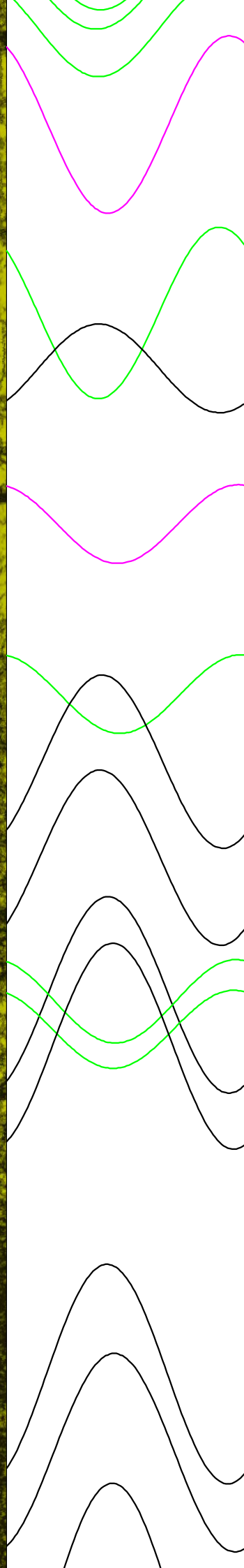
14.0
14.2
14.4
14.6
14.8
15.0
15.2
15.4
15.6
15.8
16.0
16.2
16.4
16.6
16.8



97
99
98
100
101
102
103
105
104
107
109
106
108
110
111
112
113
114
115
116
117
118
119
120
121



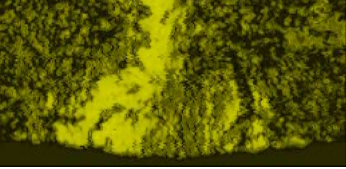
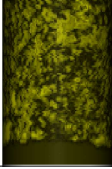
17.0
17.2
17.4
17.6
17.8
18.0
18.2
18.4
18.6
18.8
19.0
19.2
19.4
19.6



122
123
124
125
126
127
128
130
131
129
132
133
134

19.8

20.0



135