



Messprogramm
ETIBS® - Optischer Bohrlochscanner
ABF - Akustisches Bohrlochfernsehen

Erkundungsobjekt
Rhein-Main-Link, PFA HE1

Auftraggeber: Bohr- ArGe 3-5
Bohrung: P05-Lif-BK-0030
Ort: Lichtenfels
Auftragsnummer: e-3679

Teufenmaßstab
1:10

Koordinaten


Rechtswert:
Hochwert:
Höhe ü. NN:

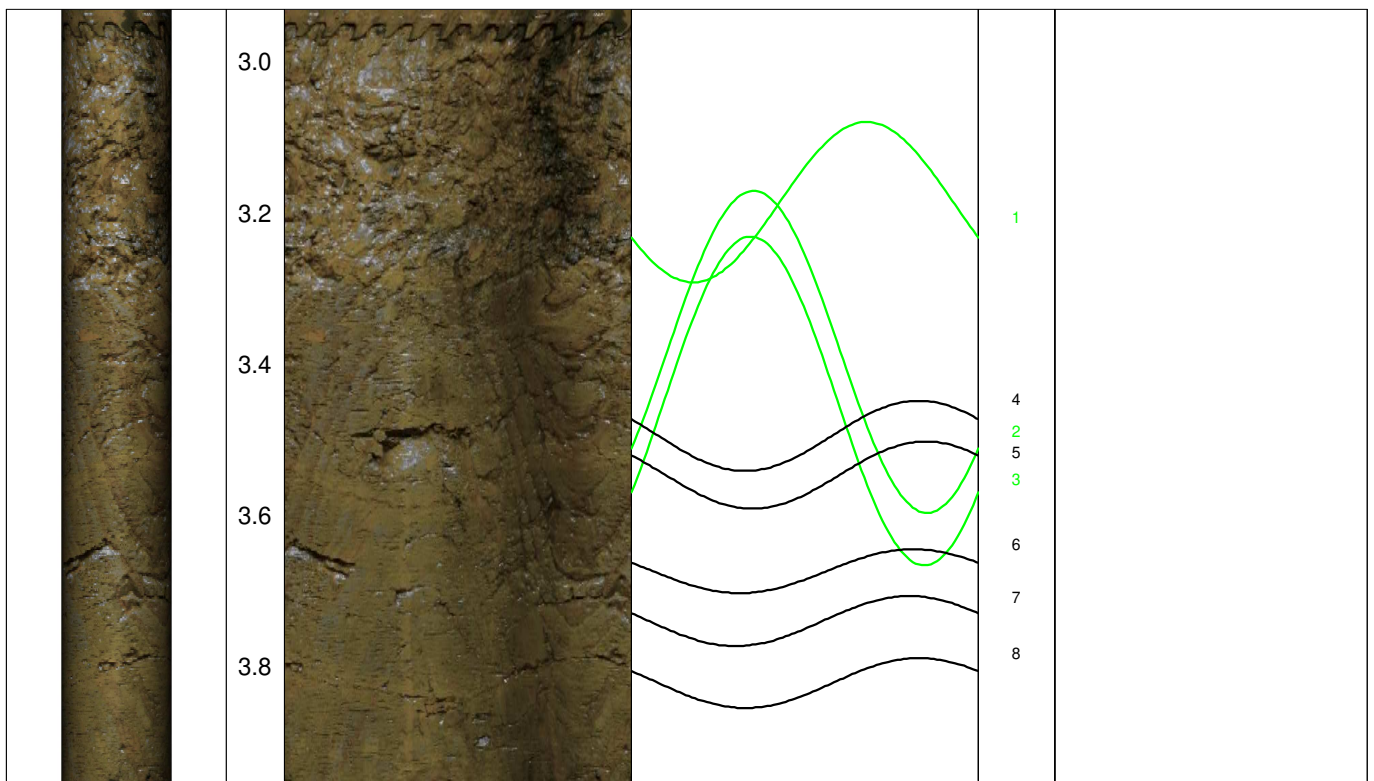
Messbezugspunkt: GOK

Messdatum:	03.03.2025	Bohrlochdurchmesser:	146 mm
Bohrteufe:	25.00 m (lt. BM)	Richtung der Bohrung:	vertikal
Messintervall:	2.93 m - 25.17 m (20.66 m)	Quelldatei:	Lif0030.blk / Lif0030.log
Verrohrung bis:	2.95 m	Messingenieur:	Hr. Newrzella
Wasserstand:	4.25 m	Bearbeiter:	Fr. Sagmajster

Bemerkungen: Messintervall ETIBS: 2.93 m - 4.35 m (1.42 m)
Messintervall ABF: 5.93 m - 25.17 m (19.24 m)
Rasch fallender Wasserspiegel, daher Befahrungslücke

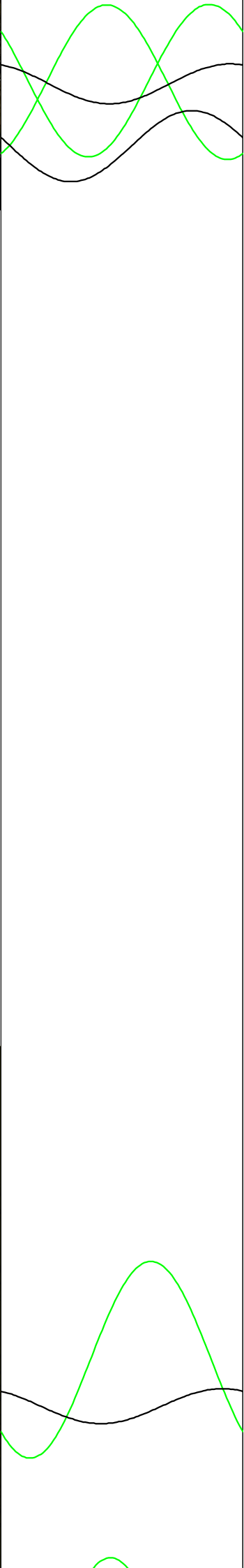
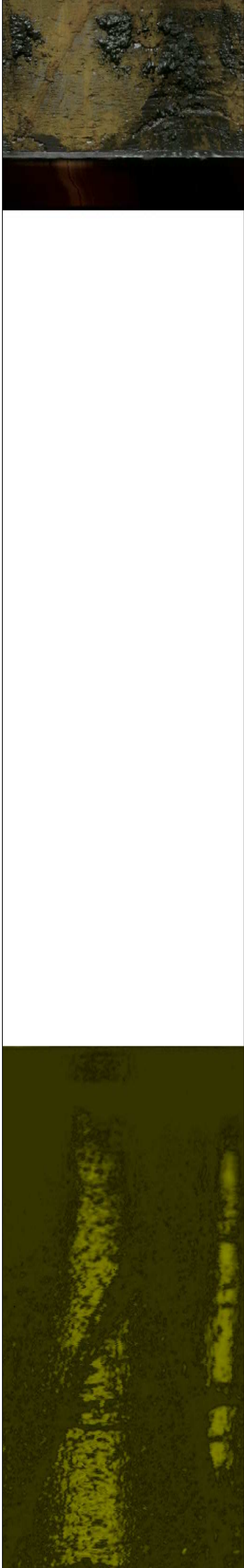
Trennflächen : schwarz - Schichtung / Schieferung
blau - Schrägschichtung
magenta - Klüfte
grün - Klüfte nur z. T. erkennbar

Pseudokern 	[m]	Bohrlochabwicklung					Trennflächenabwicklung					Nr.	Bemerkung
		N	O	S	W	N	N	O	S	W	N		





4.0
4.2
4.4
4.6
4.8
5.0
5.2
5.4
5.6
5.8
6.0
6.2
6.4
6.6
6.8

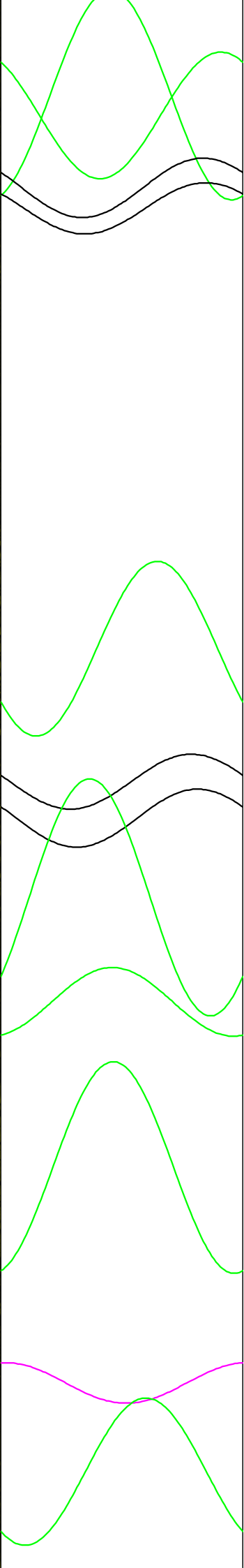
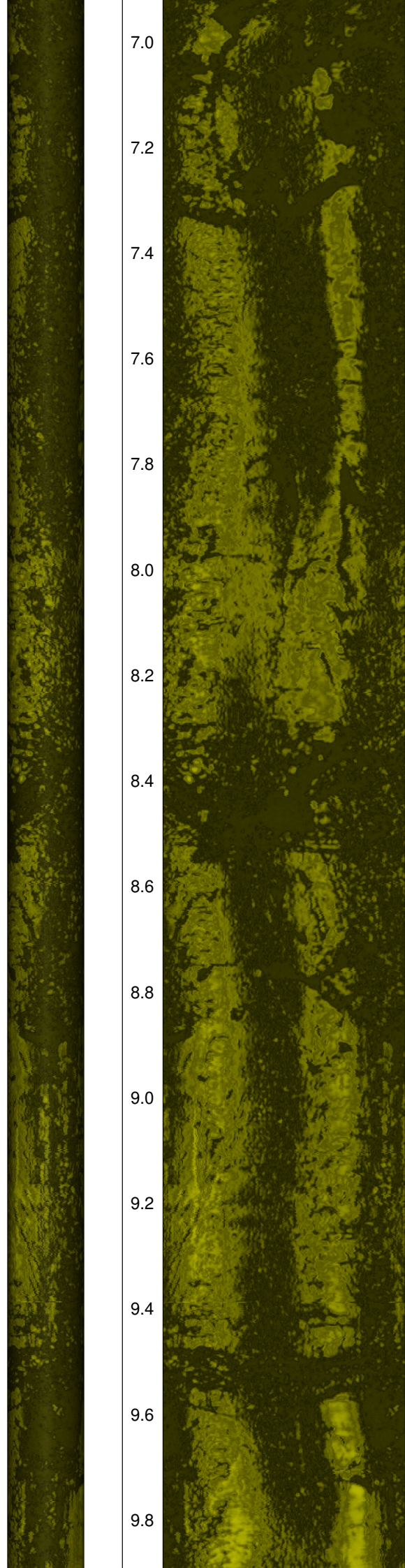


9
11
12
10
14
13

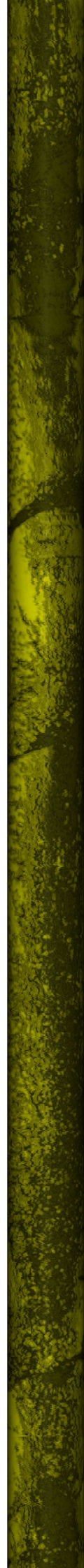
Wasserspiegel Etibs

Wasserspiegel ABF

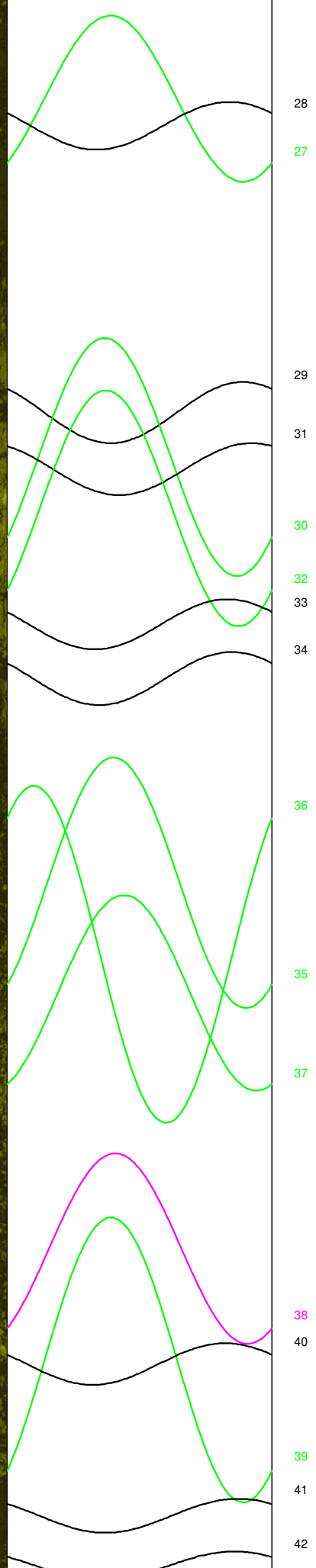
7.0
7.2
7.4
7.6
7.8
8.0
8.2
8.4
8.6
8.8
9.0
9.2
9.4
9.6
9.8

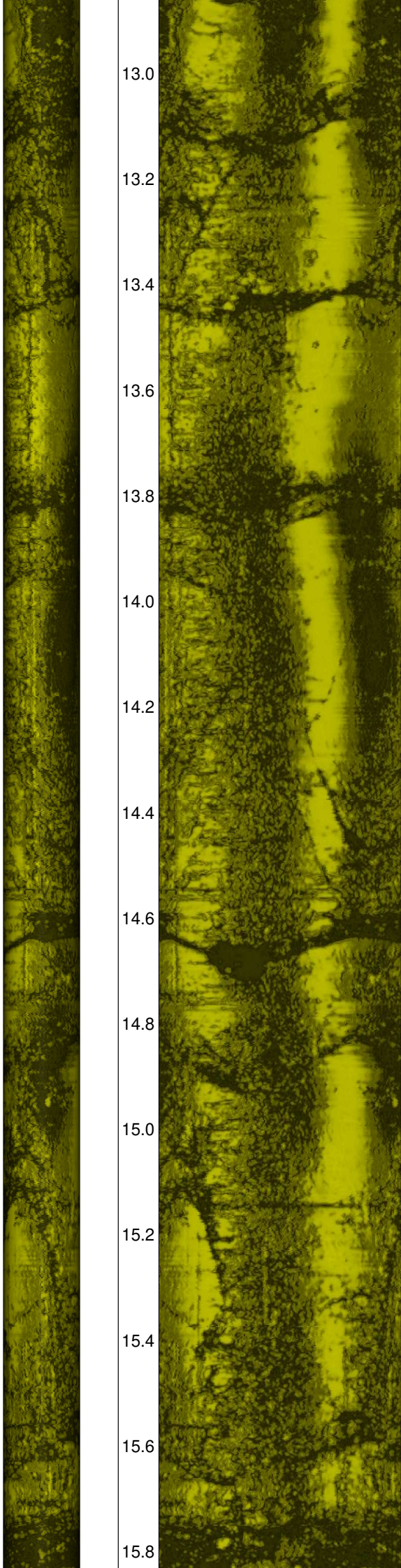


16
17
15
18
19
20
21
22
23
24
25
26



10.0
10.2
10.4
10.6
10.8
11.0
11.2
11.4
11.6
11.8
12.0
12.2
12.4
12.6
12.8





13.0

13.2

13.4

13.6

13.8

14.0

14.2

14.4

14.6

14.8

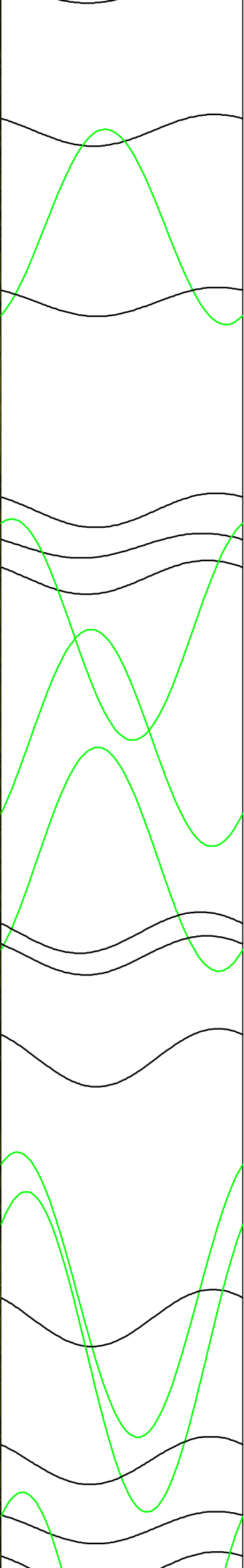
15.0

15.2

15.4

15.6

15.8



43

45

44

46

49

47

48

50

52

53

51

54

55

57

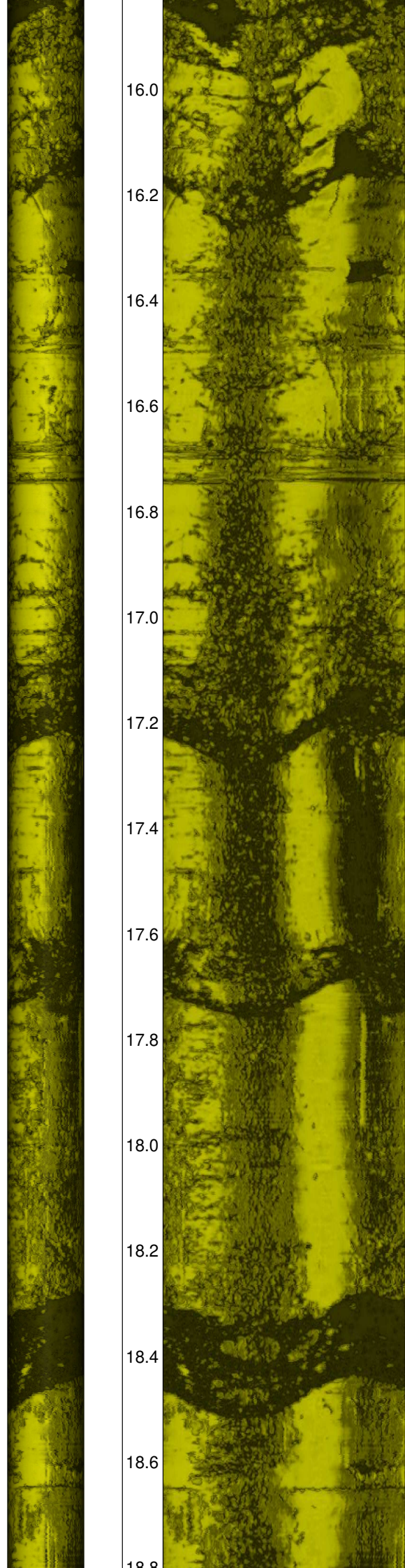
56

58

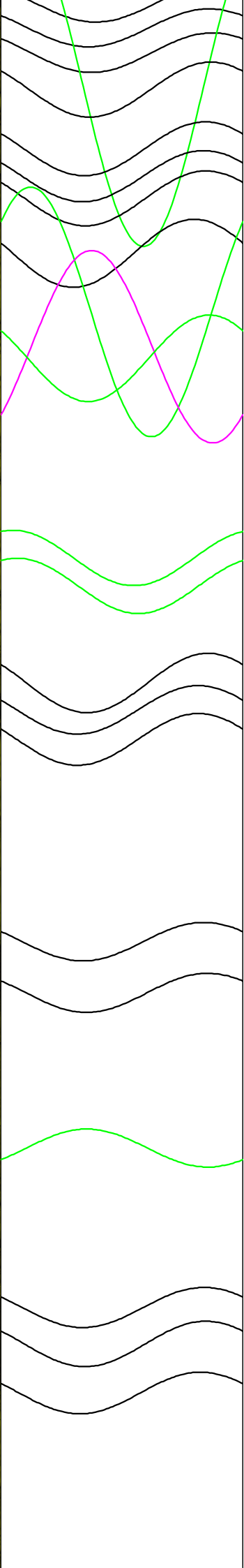
59

63

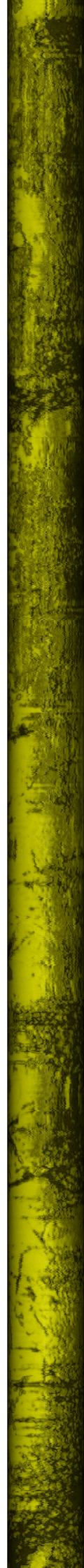
60



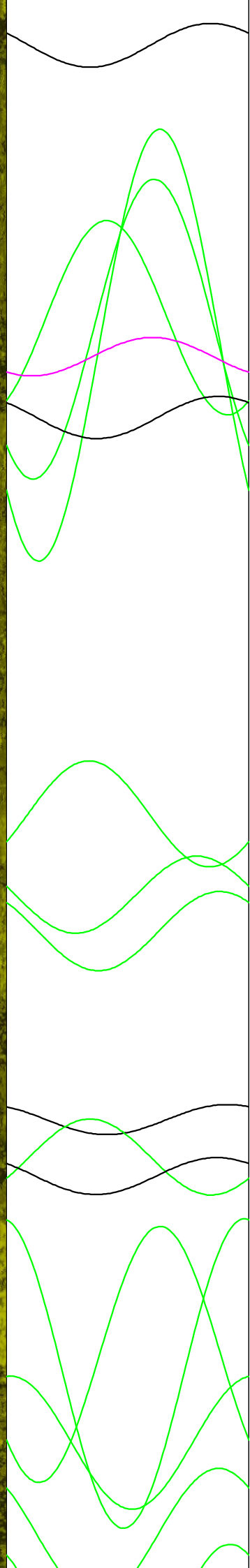
16.0
16.2
16.4
16.6
16.8
17.0
17.2
17.4
17.6
17.8
18.0
18.2
18.4
18.6
18.8



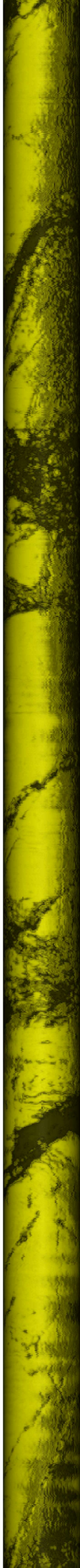
61
62
64
65
66
67
69
68
71
70
72
73
74
75
76
77
78
79
80
81
82



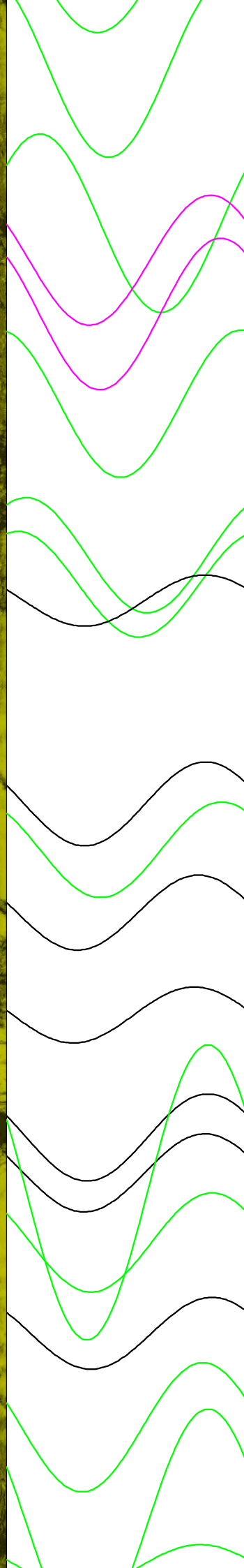
18.8
19.0
19.2
19.4
19.6
19.8
20.0
20.2
20.4
20.6
20.8
21.0
21.2
21.4
21.6



83
84
85
86
87
88
89
90
91
92
93
94
95
96
97
98
99



21.8
22.0
22.2
22.4
22.6
22.8
23.0
23.2
23.4
23.6
23.8
24.0
24.2
24.4
24.6



100
101
102
103
104
105
106
107
108
109
110
111
113
112
114
115
116
117
118

