



Geotechnisches Ingenieurbüro  
Prof. Fecker und Partner GmbH

**Messprogramm**  
ETIBS® - Optischer Bohrlochscanner  
ABF - Akustisches Bohrlochfernsehen

**Erkundungsobjekt**  
Rhein-Main-Link, PFA HE1

Auftraggeber: Bohr- ArGe 3-5  
Bohrung: P05-Lif-BK-0087  
Ort: Lichtenfels  
Auftragsnummer: e-3679

**Teufenmaßstab**  
**1:10**


**Koordinaten**  
Rechtswert:  
Hochwert:  
Höhe ü. NN:

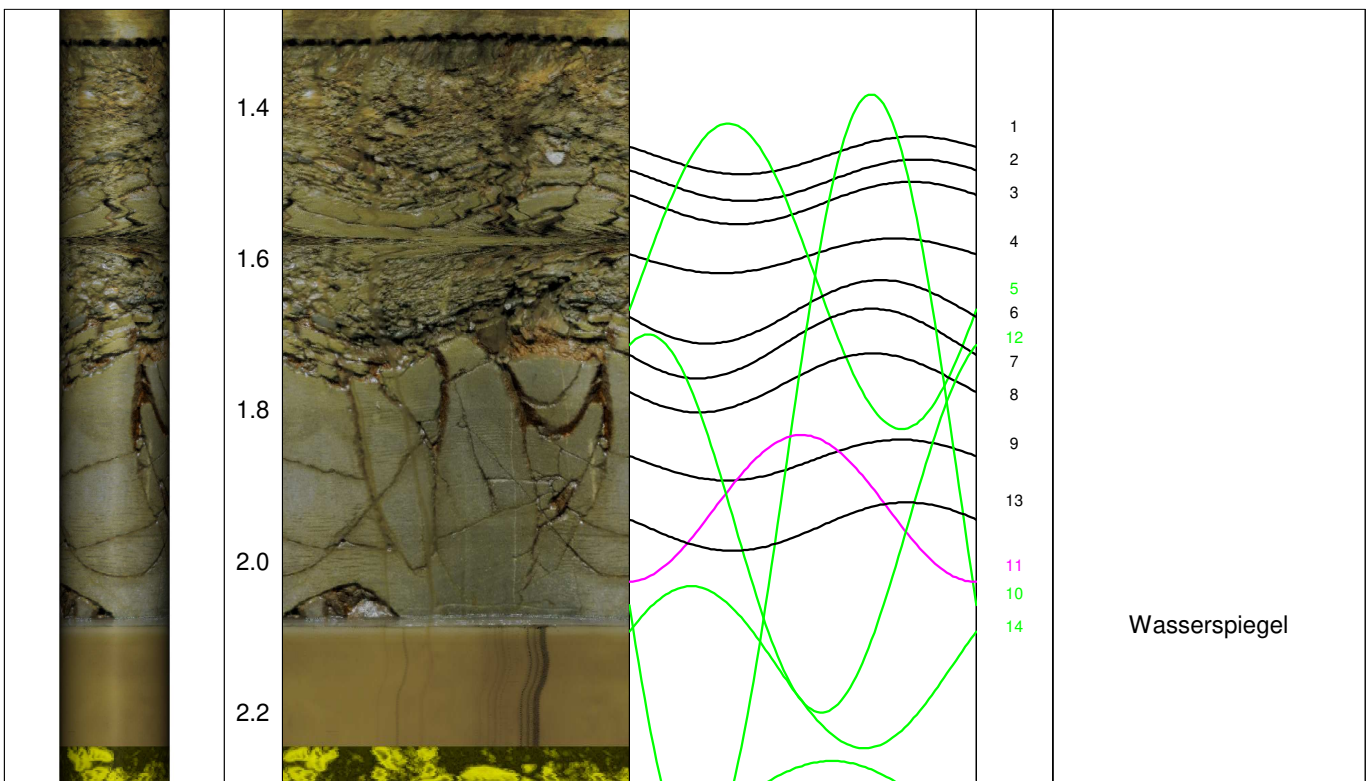
Messbezugspunkt: GOK

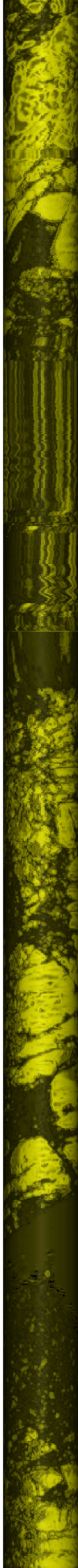
Messdatum:	26.03.2025	Bohrlochdurchmesser:	146 mm
Bohrteufe:	25.00 m (lt. BM)	Richtung der Bohrung:	vertikal
Messintervall:	1.27 m - 24.46 m (23.19 m)	Quelldatei:	Lif-0087.blk/Lif-0087.log
Verrohrung bis:	1.30 m	Messingenieur:	Hr. Newrzella
Wasserstand:	2.08 m	Bearbeiter:	Hr. Ertelt

**Bemerkungen:** Messintervall ETIBS: 1.27 m - 2.24 m (0.97 m)  
Messintervall ABF: 2.24 m - 24.46 m (22.22 m)

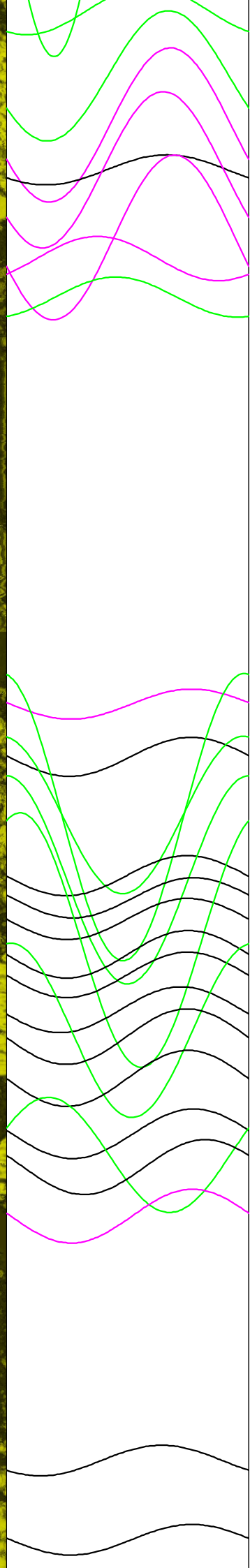
**Trennflächen :** schwarz - Schichtung / Schieferung  
blau - Schrägschichtung  
magenta - Klüfte  
grün - Klüfte nur z. T. erkennbar

Pseudokern 	[m]	Bohrlochabwicklung					Trennflächenabwicklung					Nr.	Bemerkung
		N	O	S	W	N	N	O	S	W	N		



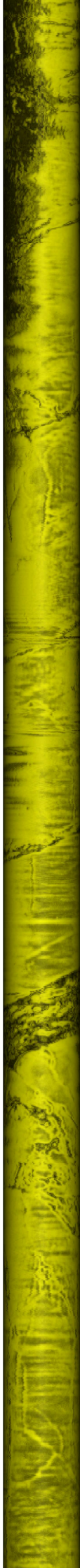


2.4  
2.6  
2.8  
3.0  
3.2  
3.4  
3.6  
3.8  
4.0  
4.2  
4.4  
4.6  
4.8  
5.0  
5.2



15  
16  
17  
18  
19  
20  
21  
22  
  
26  
23  
25  
24  
28  
31  
27  
29  
30  
35  
32  
33  
34  
36  
37  
39  
38  
40  
41  
  
42  
43





5.4

5.6

5.8

6.0

6.2

6.4

6.6

6.8

7.0

7.2

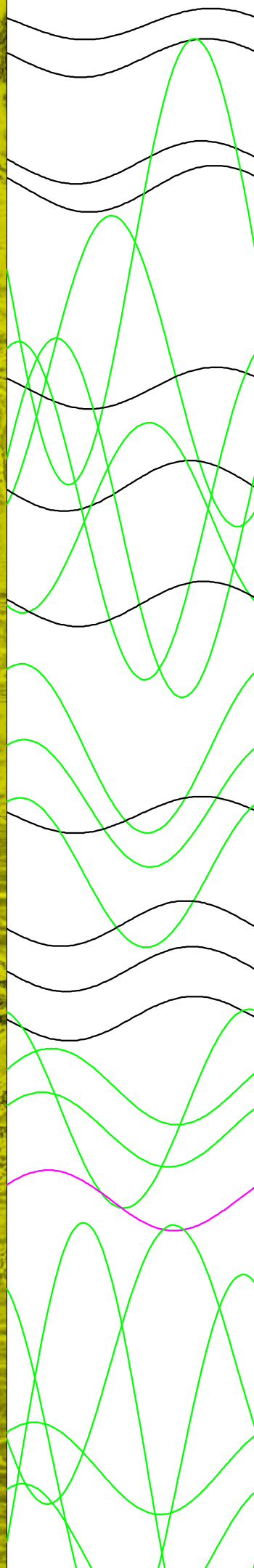
7.4

7.6

7.8

8.0

8.2



44

45

46

47

48

52

50

53

51

49

55

54

56

57

59

58

60

61

64

62

63

65

66

69

70

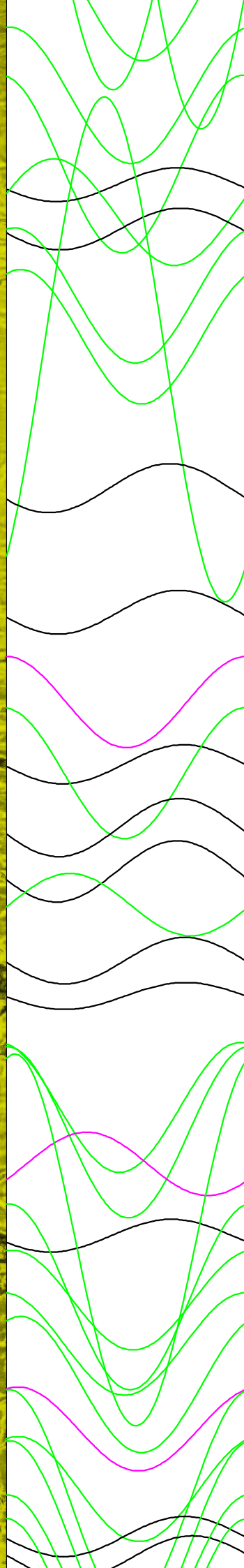
67

71

68

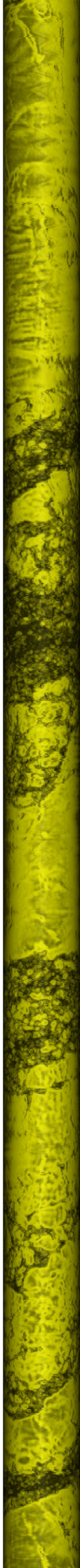


8.4  
8.6  
8.8  
9.0  
9.2  
9.4  
9.6  
9.8  
10.0  
10.2  
10.4  
10.6  
10.8  
11.0  
11.2

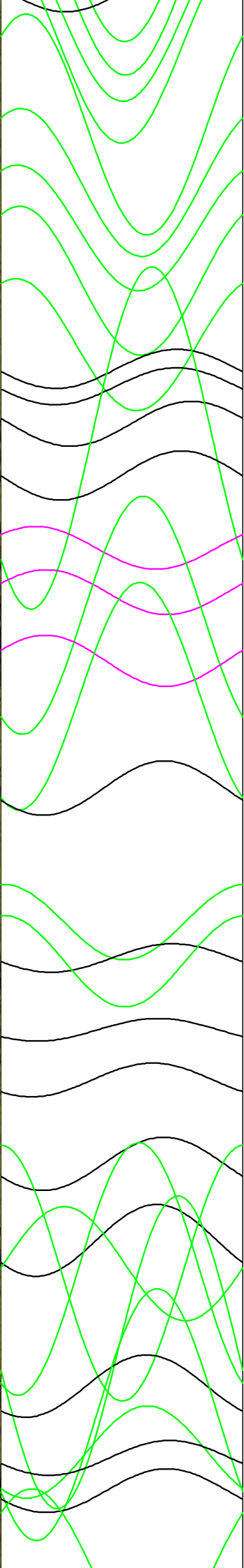


72  
73  
74  
75  
77  
76  
78  
80  
79  
81  
82  
84  
83  
85  
86  
87  
88  
89  
91  
90  
94  
92  
95  
93  
96  
97  
98  
101  
99  
100  
103  
105  
106  
102  
104

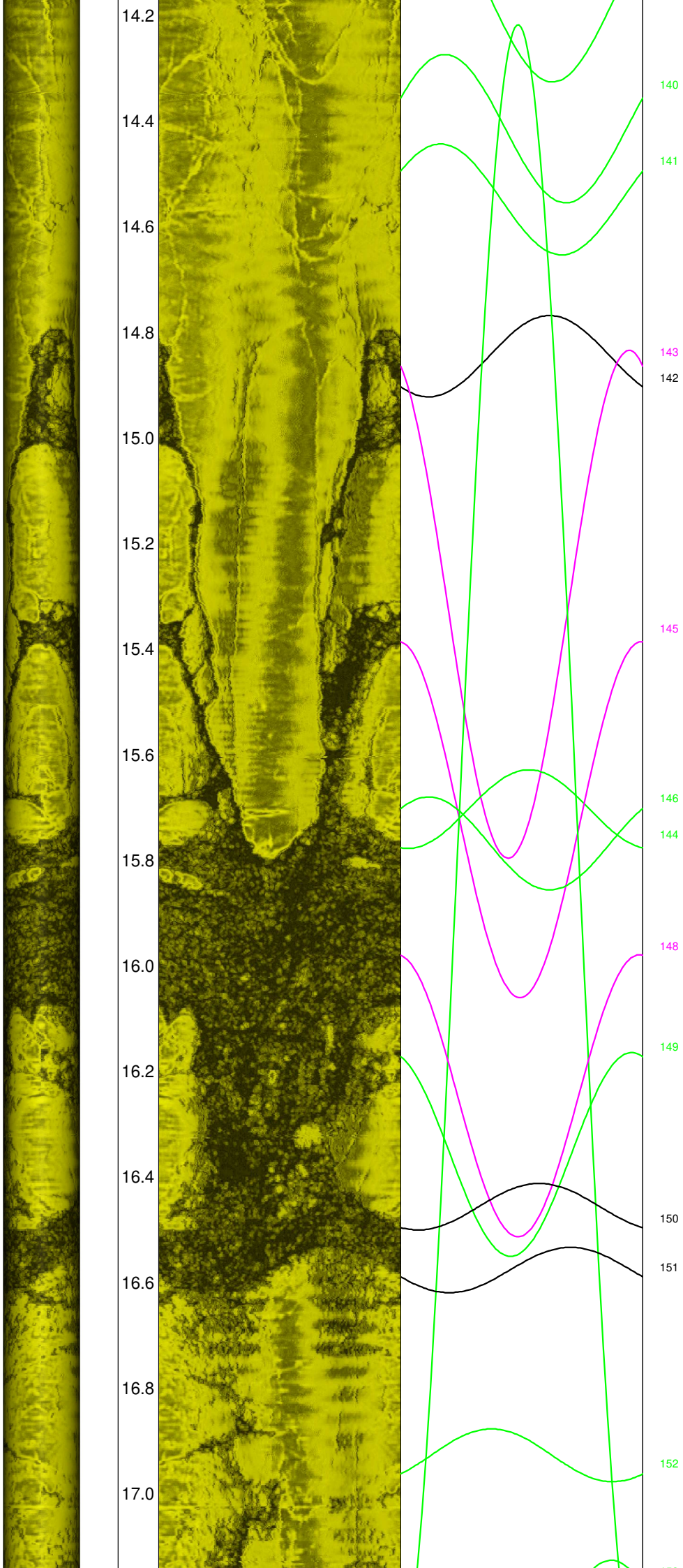




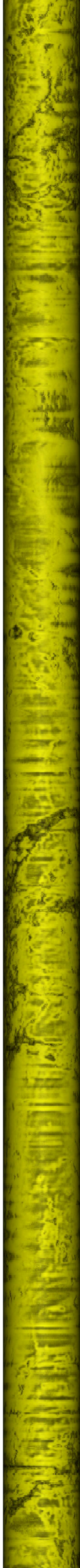
11.2  
11.4  
11.6  
11.8  
12.0  
12.2  
12.4  
12.6  
12.8  
13.0  
13.2  
13.4  
13.6  
13.8  
14.0



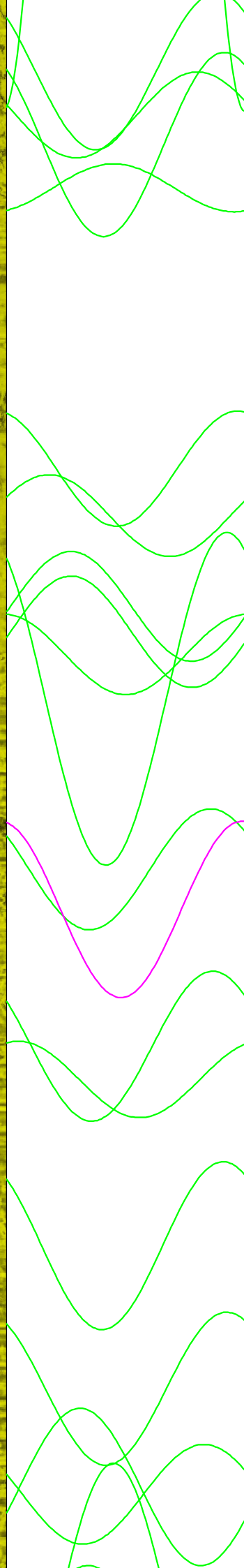
107  
108  
109  
110  
111  
112  
113  
114  
116  
117  
115  
118  
120  
119  
121  
122  
123  
125  
124  
126  
127  
132  
128  
129  
130  
133  
131  
134  
137  
136  
135  
138  
139



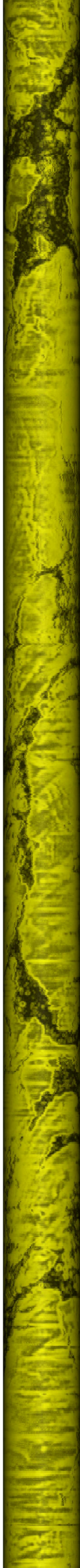




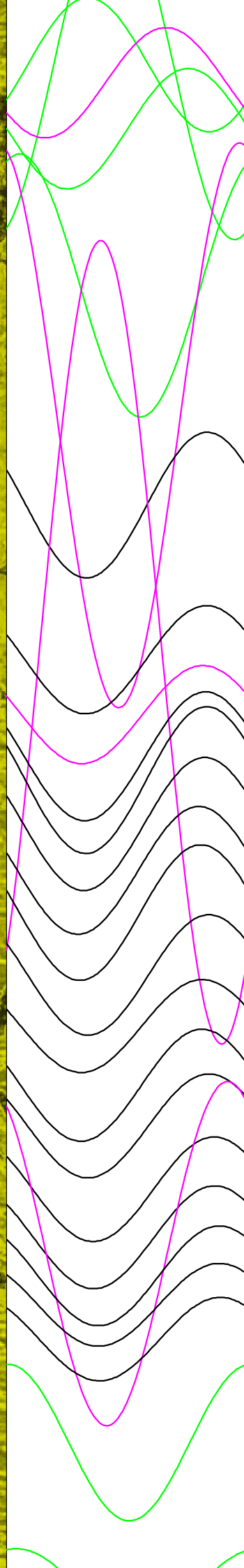
17.2  
17.4  
17.6  
17.8  
18.0  
18.2  
18.4  
18.6  
18.8  
19.0  
19.2  
19.4  
19.6  
19.8  
20.0



153  
155  
147  
154  
156  
157  
158  
162  
159  
161  
160  
164  
163  
165  
166  
167  
168  
170  
169



20.2  
20.4  
20.6  
20.8  
21.0  
21.2  
21.4  
21.6  
21.8  
22.0  
22.2  
22.4  
22.6  
22.8  
23.0



171  
173  
174  
176  
175  
  
172  
  
177  
  
179  
180  
181  
182  
183  
184  
185  
186  
178  
187  
188  
189  
192  
190  
191  
193  
194  
195  
196  
197



