



Messprogramm
ETIBS® - Optischer Bohrlochscanner
ABF - Akustisches Bohrlochfernsehen

Erkundungsobjekt
Rhein-Main-Link, PFA HE1

Auftraggeber: Bohr- ArGe 3-5
Bohrung: P05-Voh-BK-0048
Ort: Vöhl
Auftragsnummer: e-3679

Teufenmaßstab
1:10

Koordinaten


Rechtswert:
Hochwert:
Höhe ü. NN:

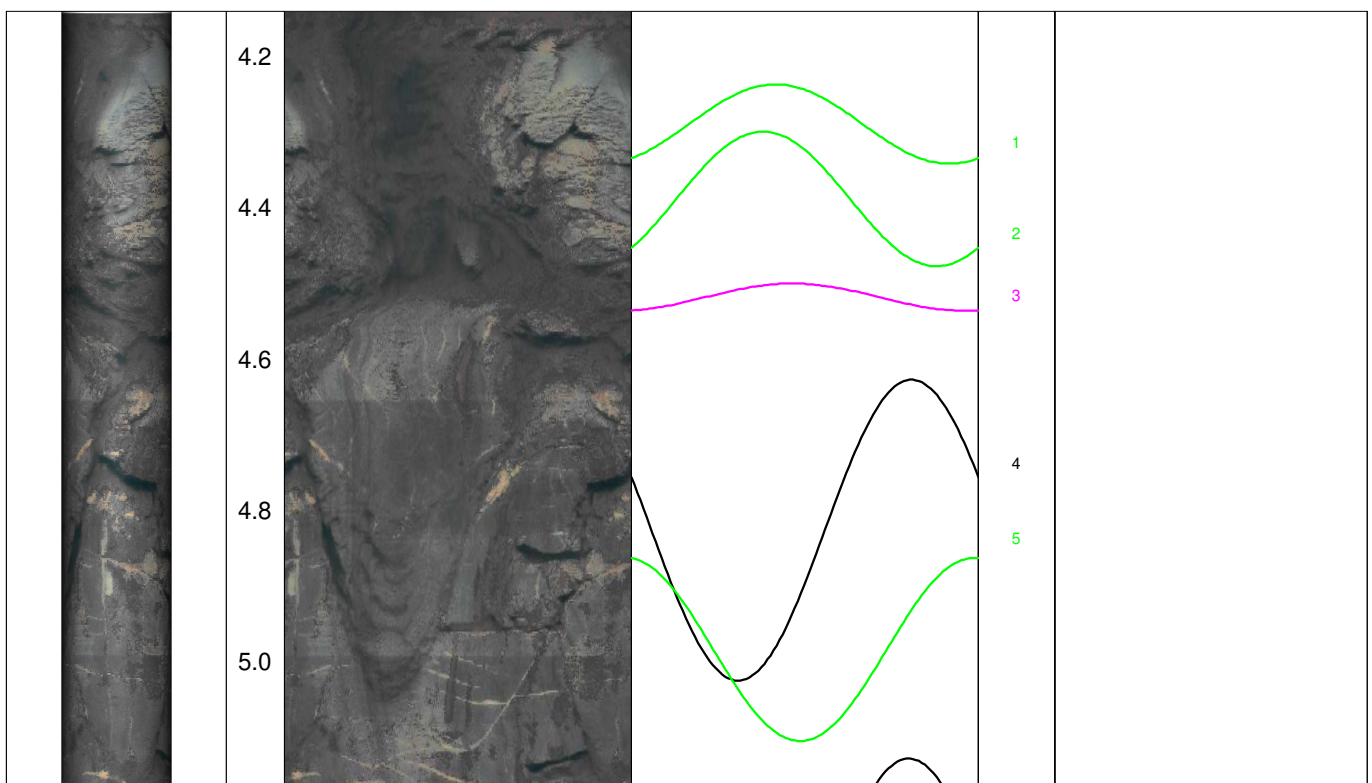
Messbezugspunkt: GOK

Messdatum:	23.04.2026	Bohrlochdurchmesser:	146 mm
Bohrteufe:	60.00 m (lt. BM)	Richtung der Bohrung:	vertikal
Messintervall:	4.14 m - 59.95 m (55.81 m)	Quelldatei:	Voh0048.blk / Voh0048.log
Verrohrung bis:	4.17 m	Messingenieur:	Hr. Newrzella
Wasserstand:	2.80 m (lt. BM)	Bearbeiter:	Hr. Barsuhn

Bemerkungen: Messintervall ETIBS: 4.14 m - 19.80 m (15.66 m)
Messintervall ABF: 19.80 m - 59.95 m (40.15 m)

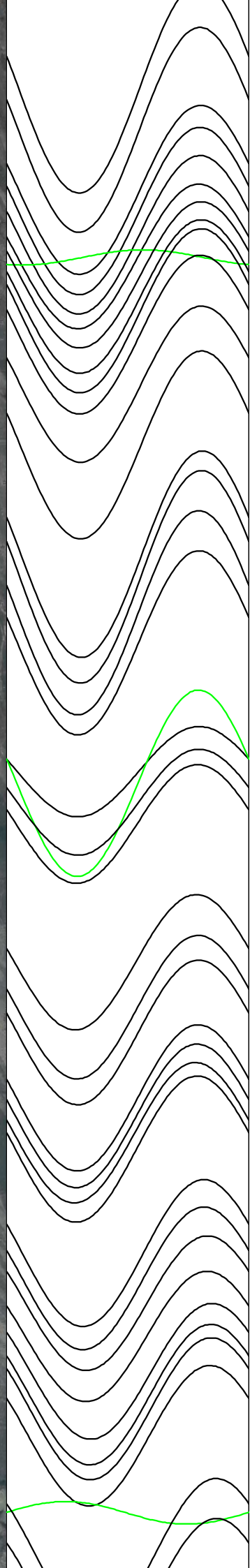
Trennflächen : schwarz - Schichtung / Schieferung
blau - Schrägschichtung
magenta - Klüfte
grün - Klüfte nur z. T. erkennbar

Pseudokern 	[m]	Bohrlochabwicklung					Trennflächenabwicklung					Nr.	Bemerkung
		N	O	S	W	N	N	O	S	W	N		

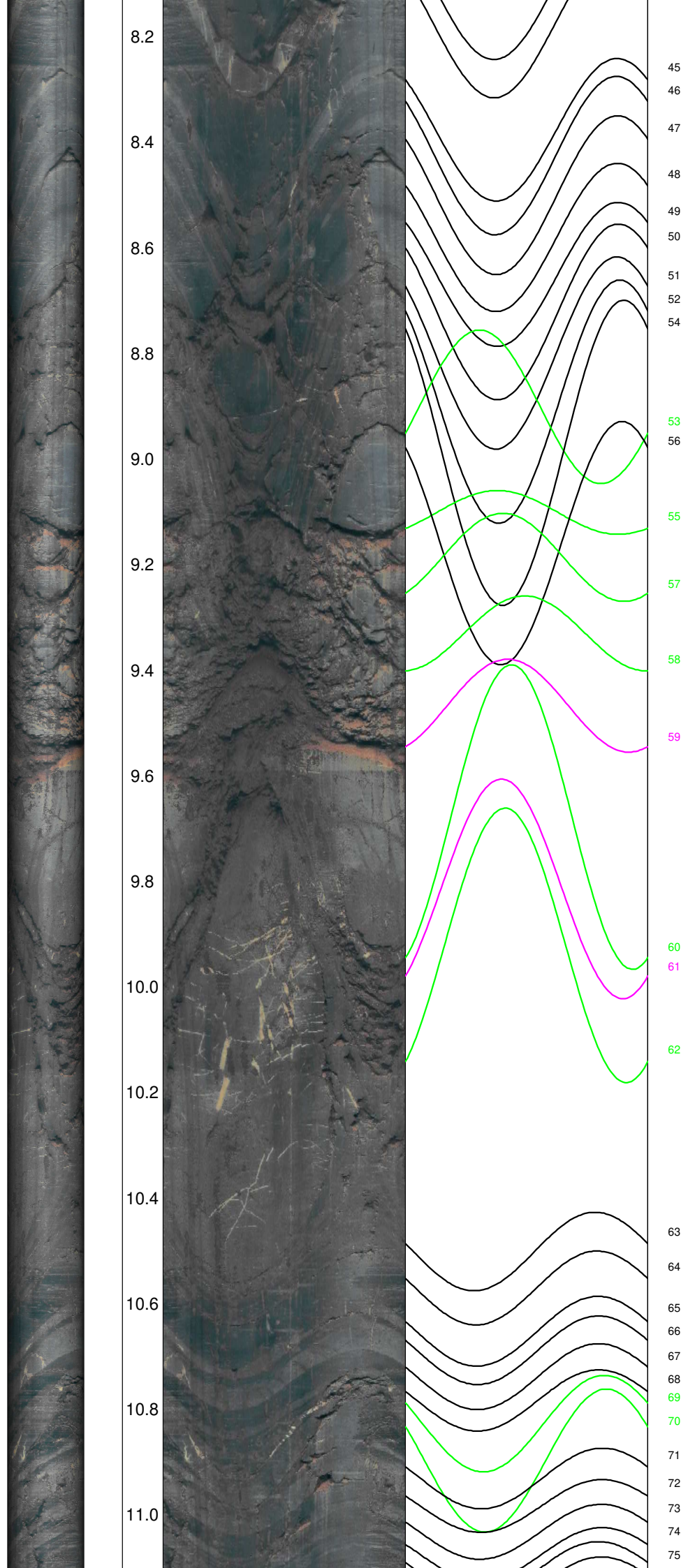




5.2
5.4
5.6
5.8
6.0
6.2
6.4
6.6
6.8
7.0
7.2
7.4
7.6
7.8
8.0

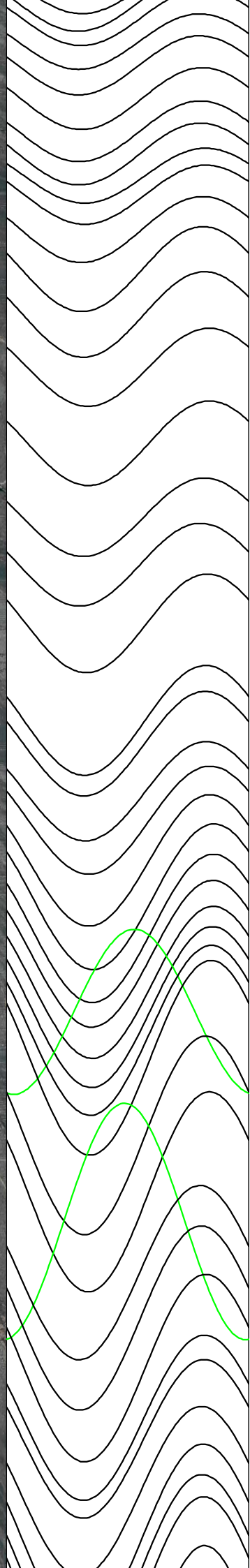


6
7
8
9
10
11
13
12
14
15
16
17
18
19
20
21
22
23
24
25
26
27
28
29
30
31
32
33
34
35
36
37
38
39
40
41
43
42
44





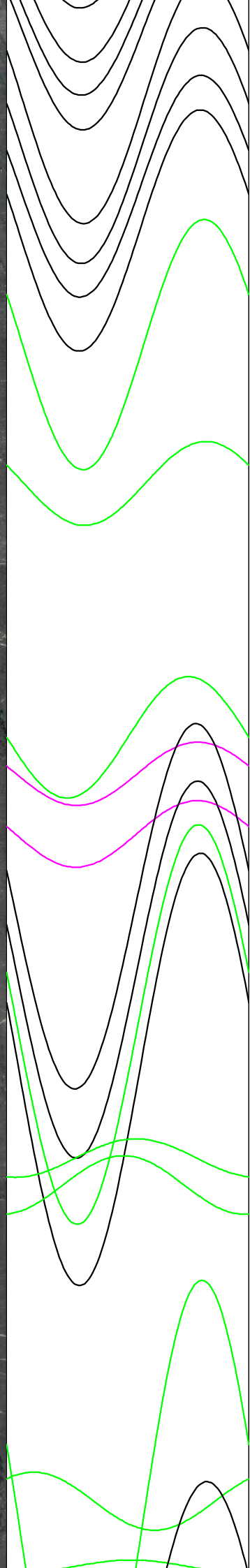
11.2
11.4
11.6
11.8
12.0
12.2
12.4
12.6
12.8
13.0
13.2
13.4
13.6
13.8
14.0



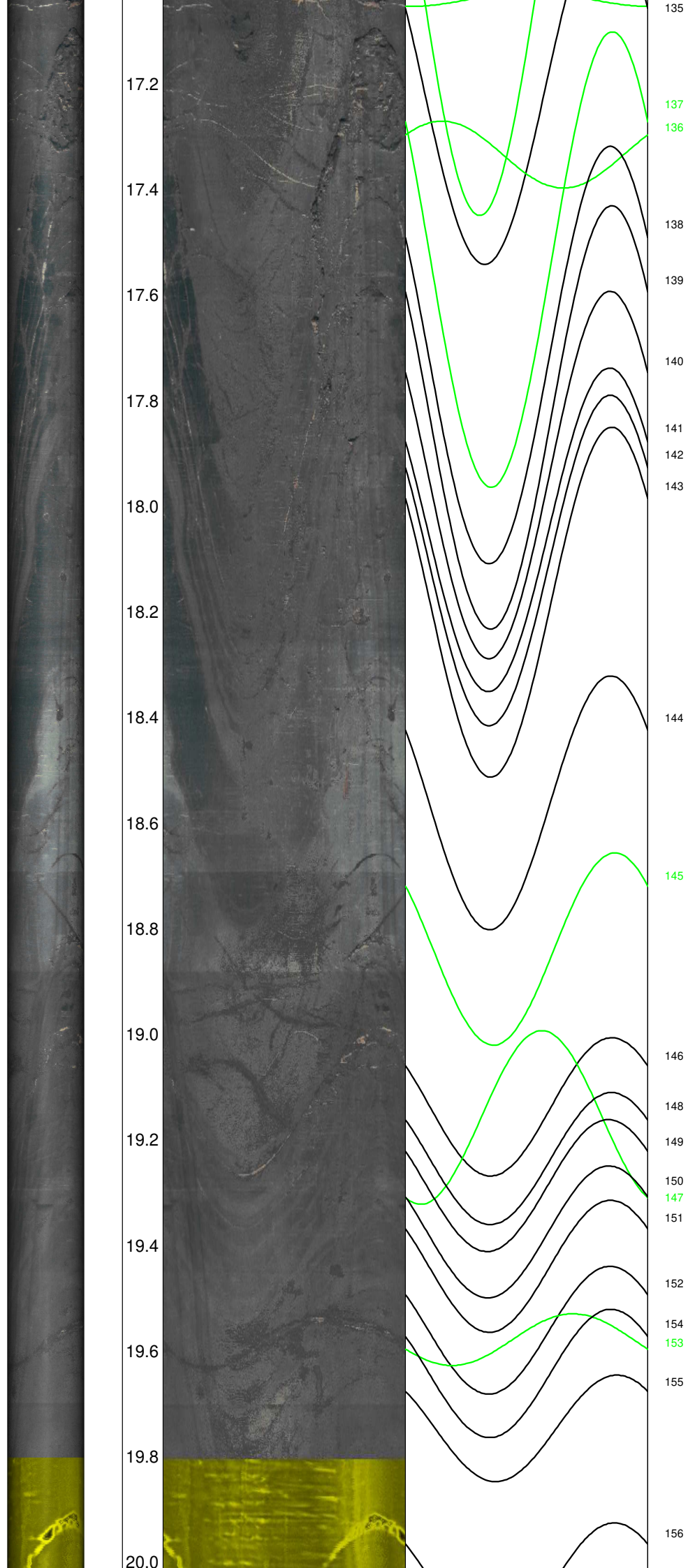
76
77
78
79
80
81
82
83
84
85
86
87
88
89
90
91
92
93
94
95
96
97
98
99
100
101
103
104
105
102
106
108
109
110
107
111
112
113
114
115
116

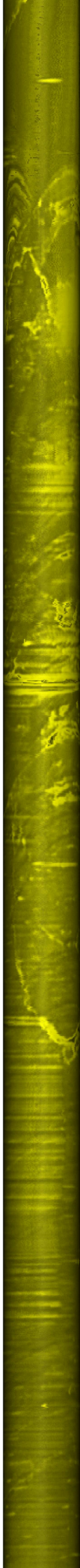


14.2
14.4
14.6
14.8
15.0
15.2
15.4
15.6
15.8
16.0
16.2
16.4
16.6
16.8
17.0

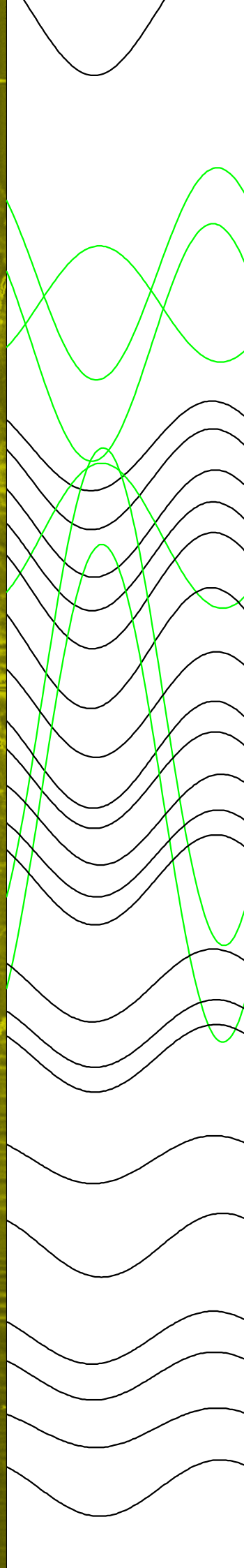


117
118
119
120
121
122
123
124
125
126
127
128
129
130
131
133
132
134





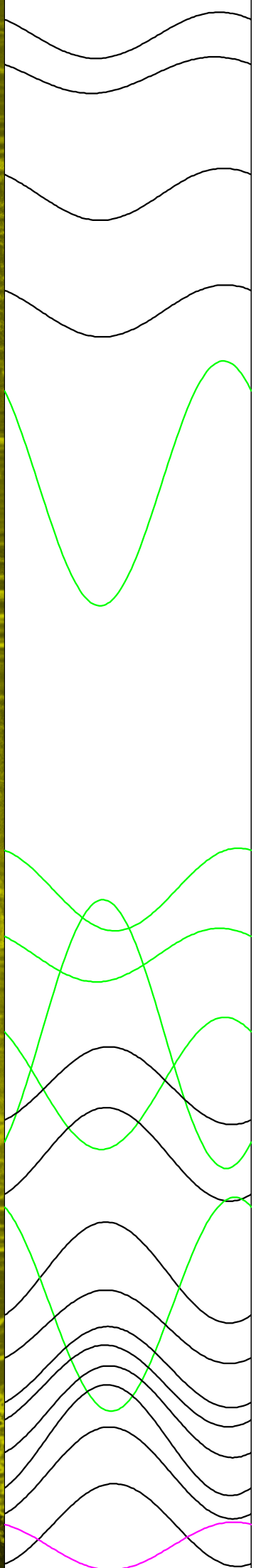
20.2
20.4
20.6
20.8
21.0
21.2
21.4
21.6
21.8
22.0
22.2
22.4
22.6
22.8



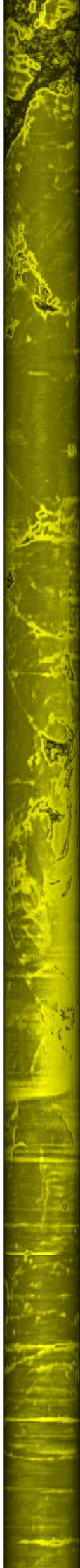
157
159
158
160
161
162
164
165
163
166
168
169
170
172
173
174
167
175
171
176
177
178
179
180
181
182
183



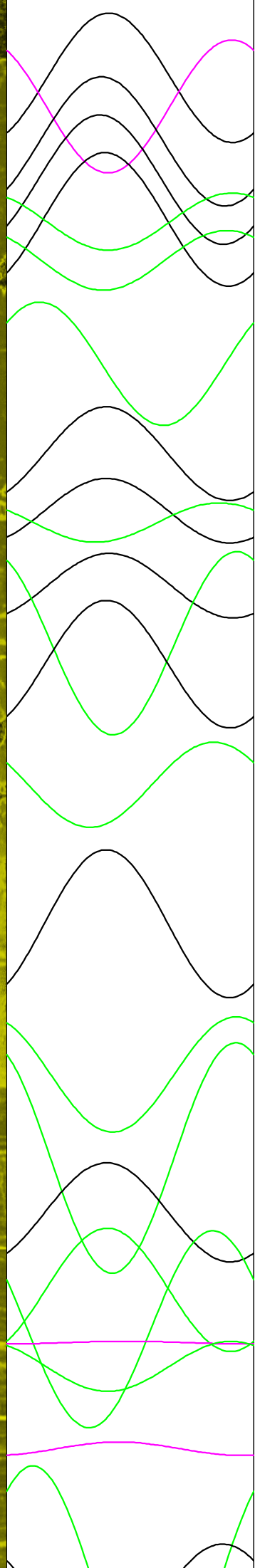
23.0
23.2
23.4
23.6
23.8
24.0
24.2
24.4
24.6
24.8
25.0
25.2
25.4
25.6
25.8



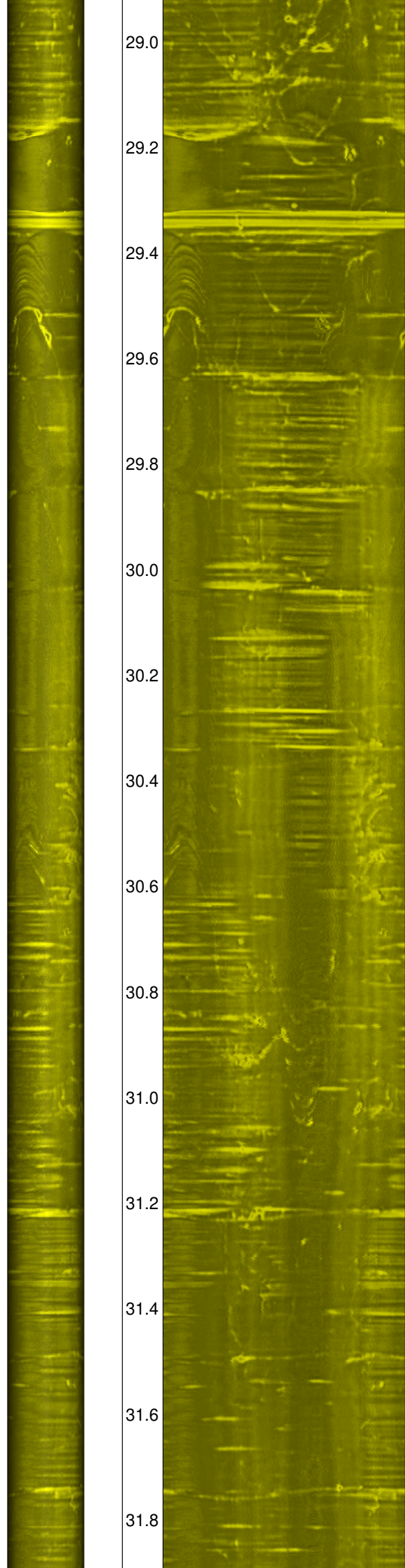
184
185
186
187
188
189
190
192
193
191
194
196
195
197
198
199
200
201
202
204
203



26.0
26.2
26.4
26.6
26.8
27.0
27.2
27.4
27.6
27.8
28.0
28.2
28.4
28.6
28.8



206
205
207
210
208
211
209
212
213
215
214
217
216
218
219
220
221
222
223
225
224
226
227
228
229
230



29.0

29.2

29.4

29.6

29.8

30.0

30.2

30.4

30.6

30.8

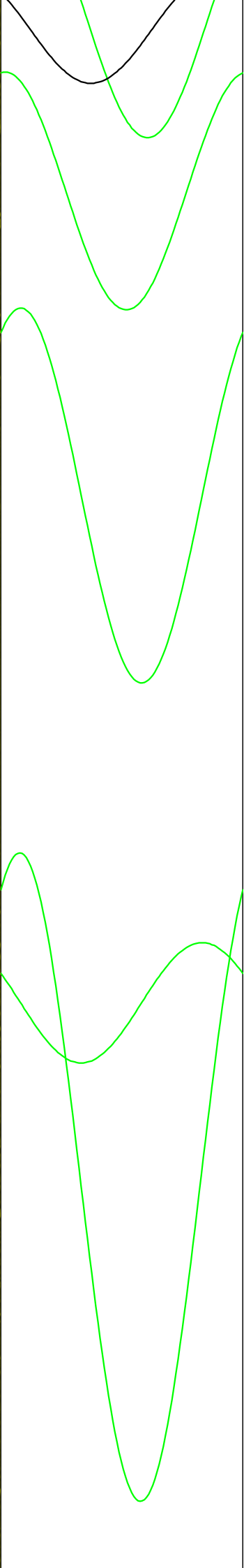
31.0

31.2

31.4

31.6

31.8

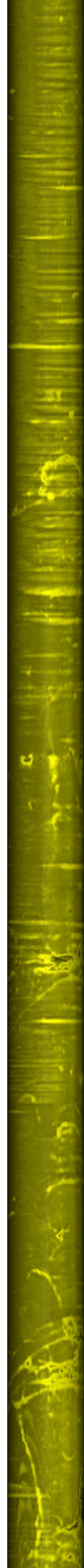


231

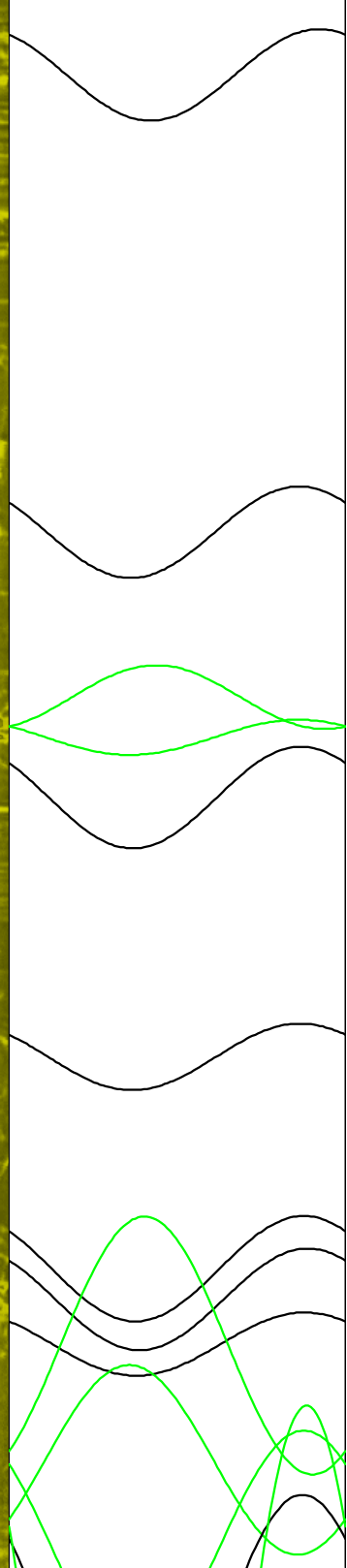
232

234

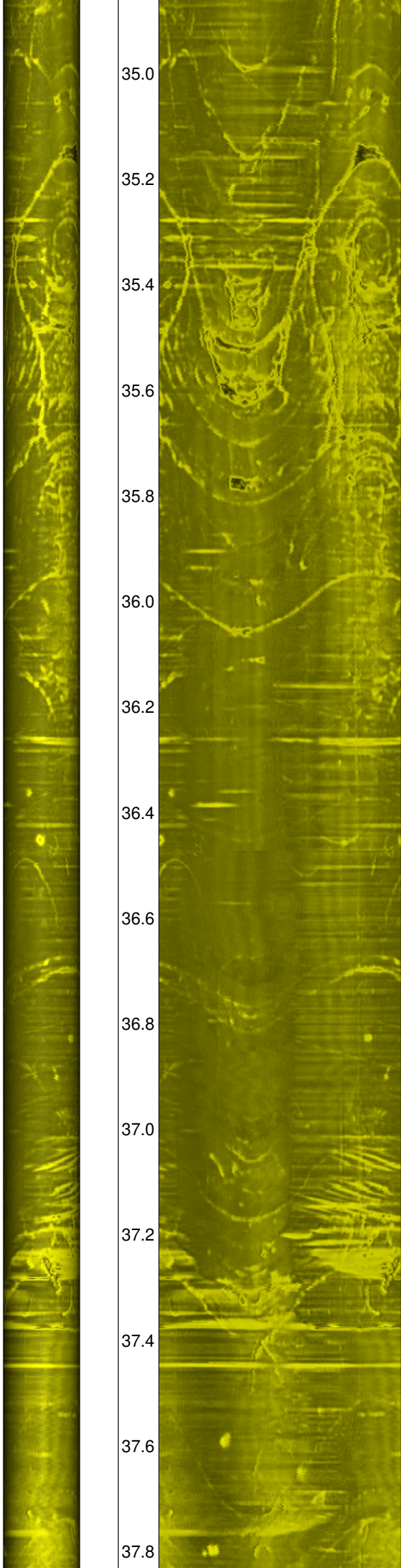
233



32.0
32.2
32.4
32.6
32.8
33.0
33.2
33.4
33.6
33.8
34.0
34.2
34.4
34.6
34.8



235
236
237
238
239
240
241
242
243
244
246
245
250
247



35.0

35.2

35.4

35.6

35.8

36.0

36.2

36.4

36.6

36.8

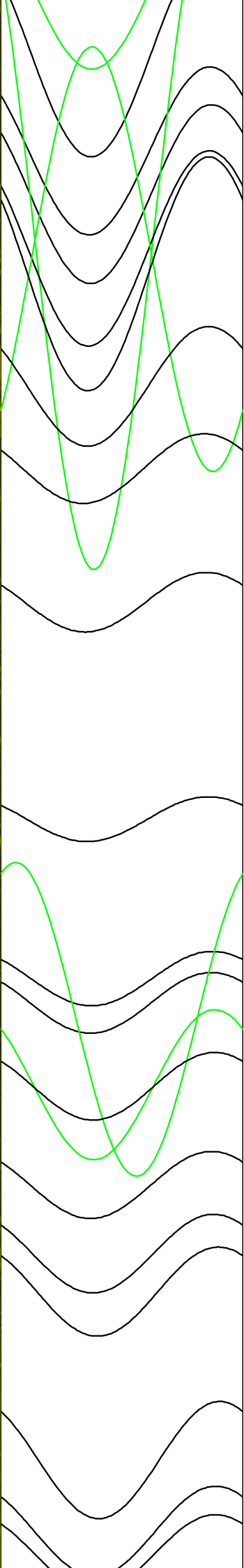
37.0

37.2

37.4

37.6

37.8



248

249

251

253

254

252

255

256

257

260

258

259

261

262

263

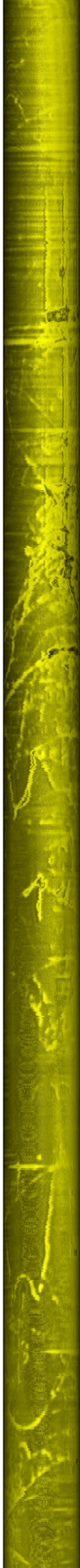
264

265

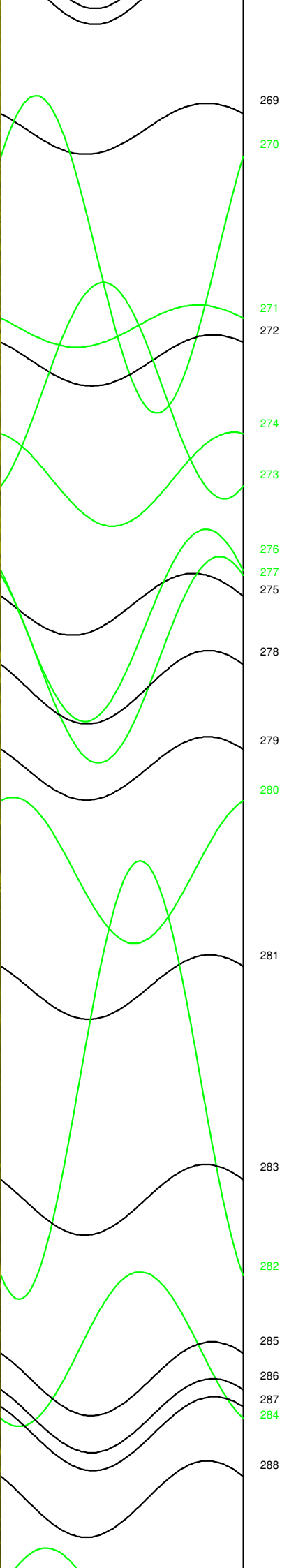
266

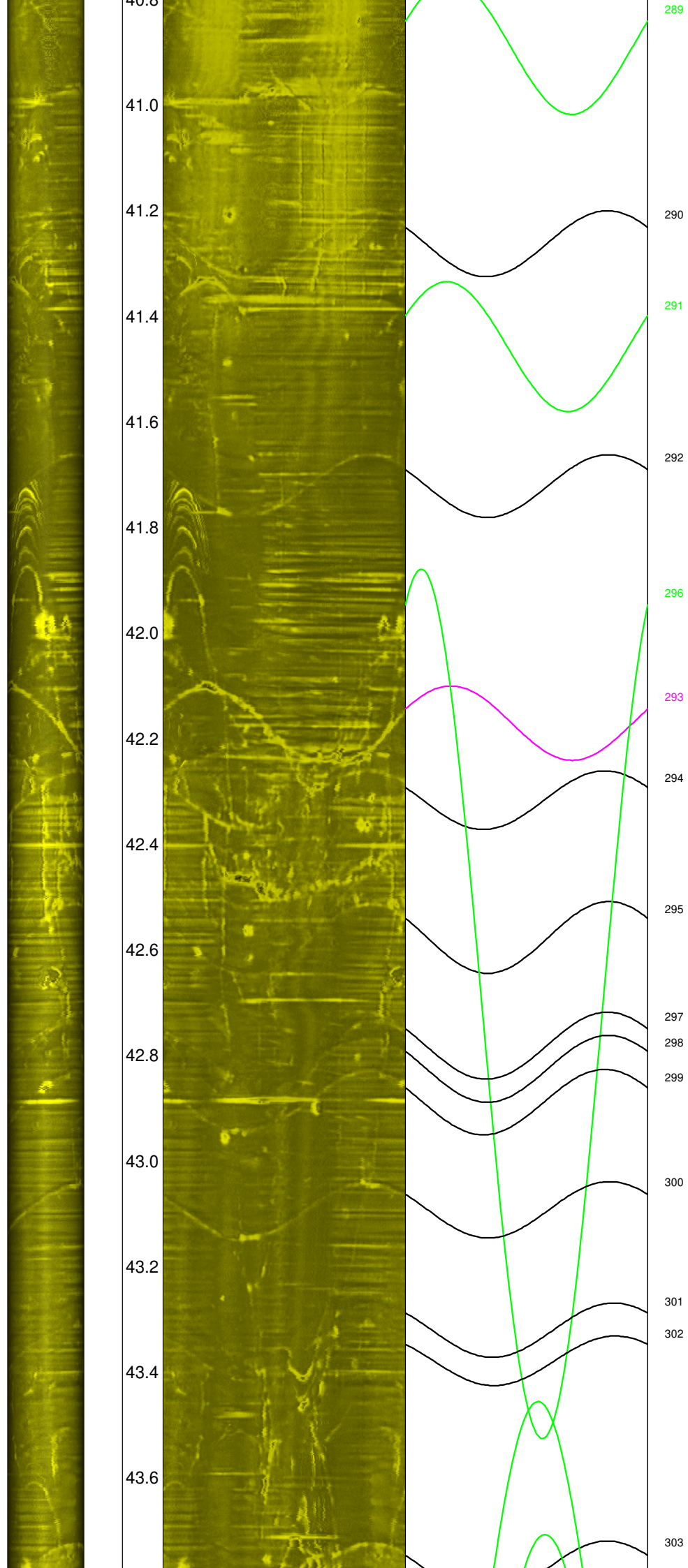
267

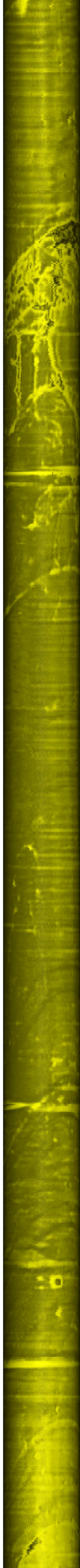
268



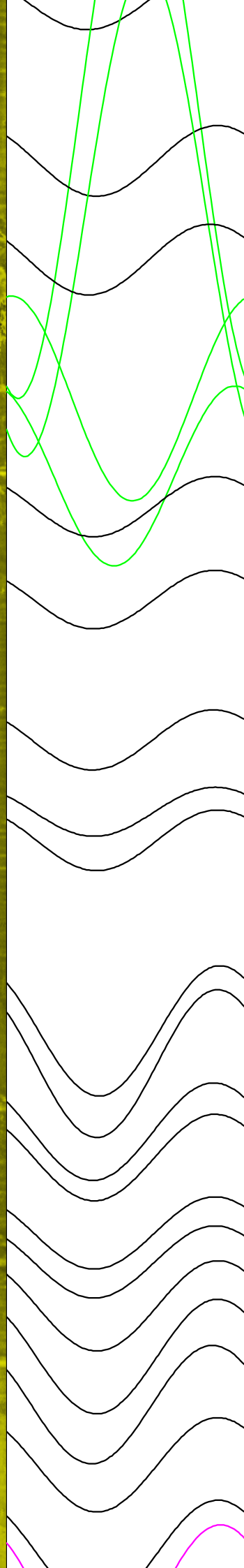
38.0
38.2
38.4
38.6
38.8
39.0
39.2
39.4
39.6
39.8
40.0
40.2
40.4
40.6
40.8



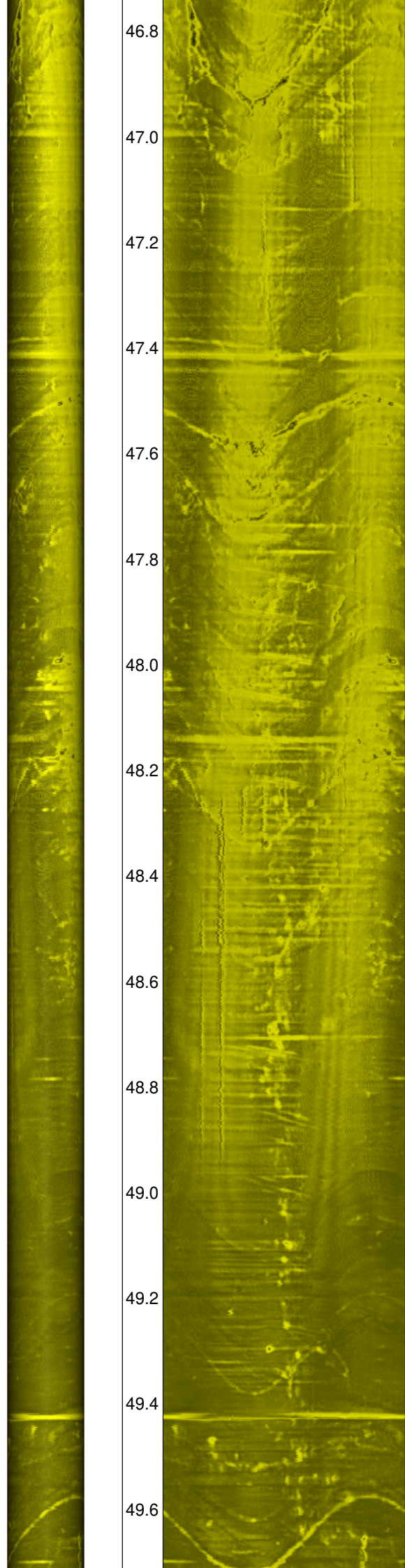




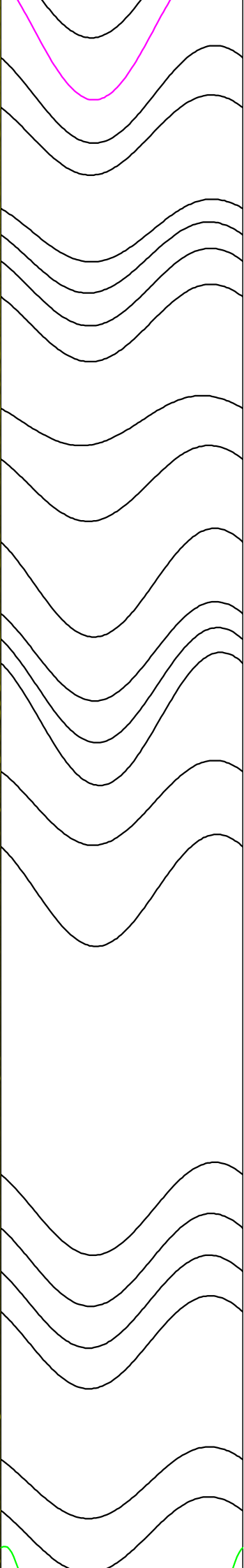
43.8
44.0
44.2
44.4
44.6
44.8
45.0
45.2
45.4
45.6
45.8
46.0
46.2
46.4
46.6



305
307
308
304
309
306
310
311
312
313
314
315
316
317
318
319
320
321
322
323
324
325
326

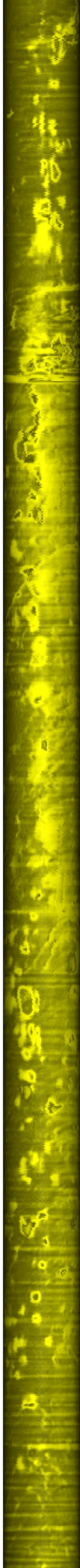


46.8
47.0
47.2
47.4
47.6
47.8
48.0
48.2
48.4
48.6
48.8
49.0
49.2
49.4
49.6

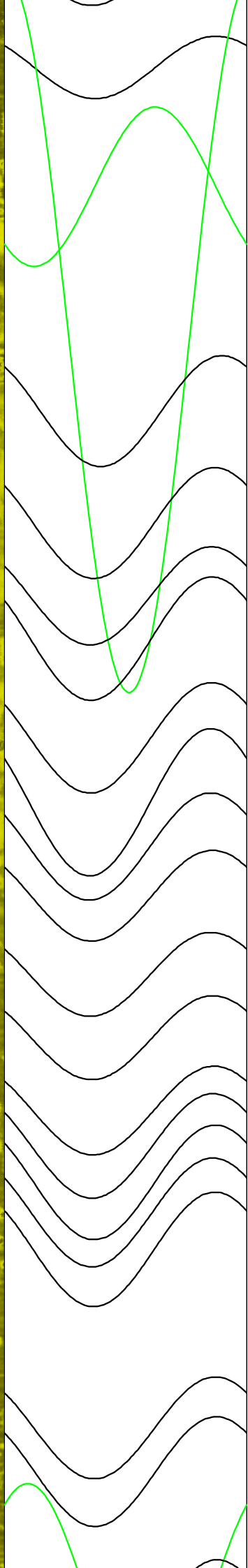


327
328
329
330
331
332
333
334
335
336
337
338
339
340
341
342
343
344
345
346
349





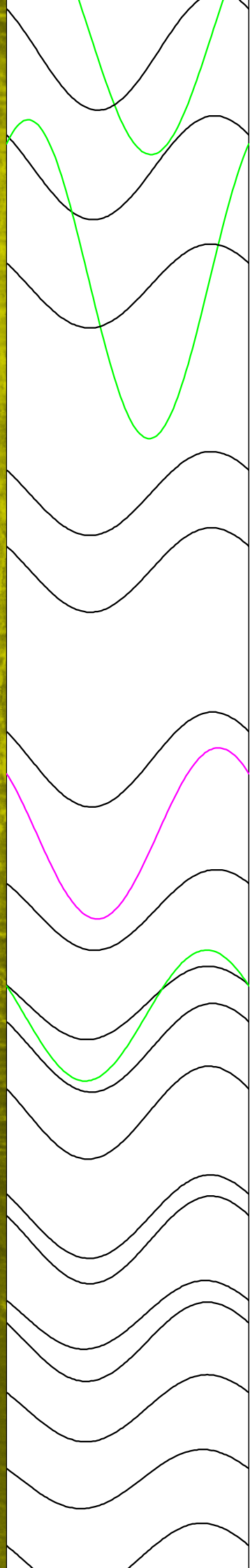
49.8
50.0
50.2
50.4
50.6
50.8
51.0
51.2
51.4
51.6
51.8
52.0
52.2
52.4
52.6



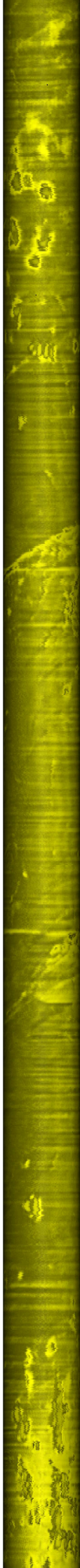
347
348
350
351
352
353
354
355
356
357
358
359
360
361
362
363
364
365
366
367
368



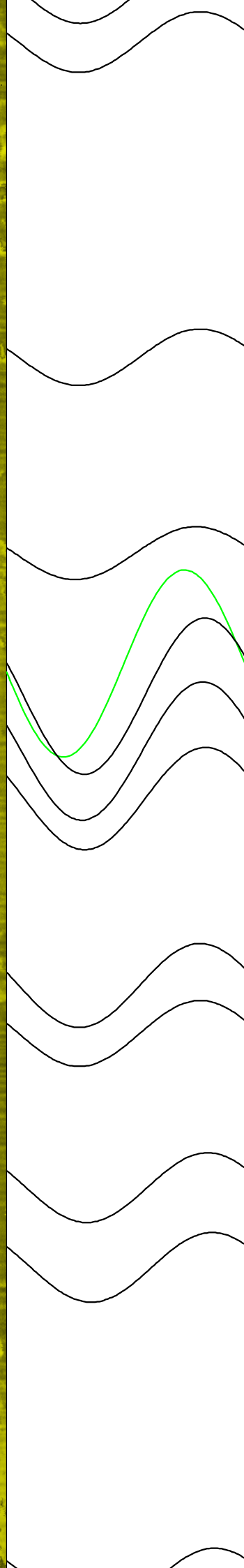
52.8
53.0
53.2
53.4
53.6
53.8
54.0
54.2
54.4
54.6
54.8
55.0
55.2
55.4
55.6



369
370
371
372
373
374
375
376
377
378
379
380
381
382
383
384
385
386
387



55.8
56.0
56.2
56.4
56.6
56.8
57.0
57.2
57.4
57.6
57.8
58.0
58.2
58.4
58.6



388
389
390
392
391
393
394
395
396
397
398
399

